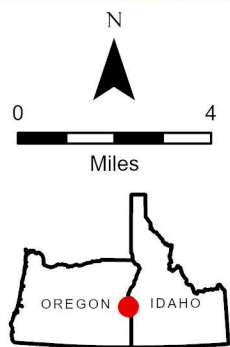


Calico Resources USA Corp.
Grassy Mountain Mine



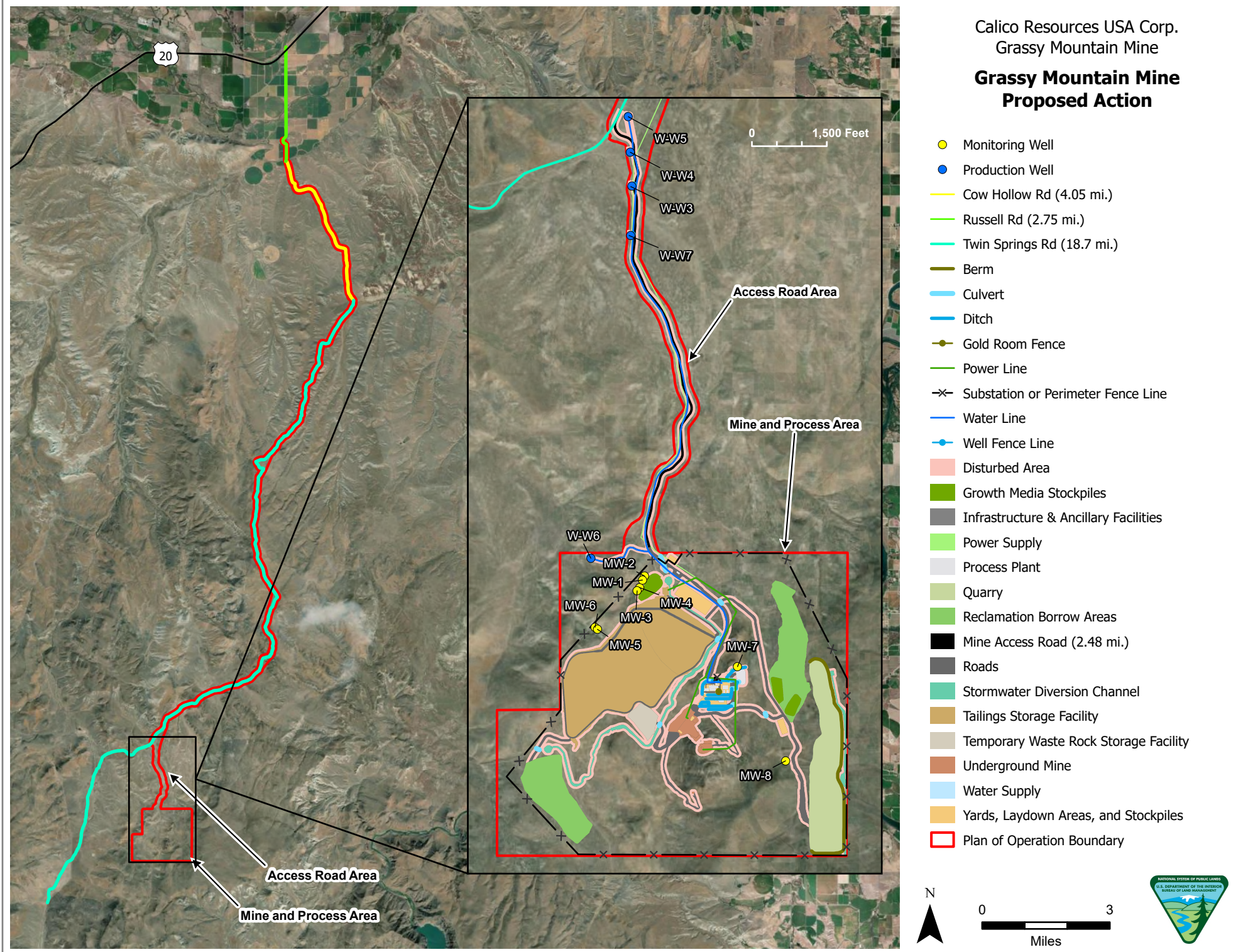
Location Map

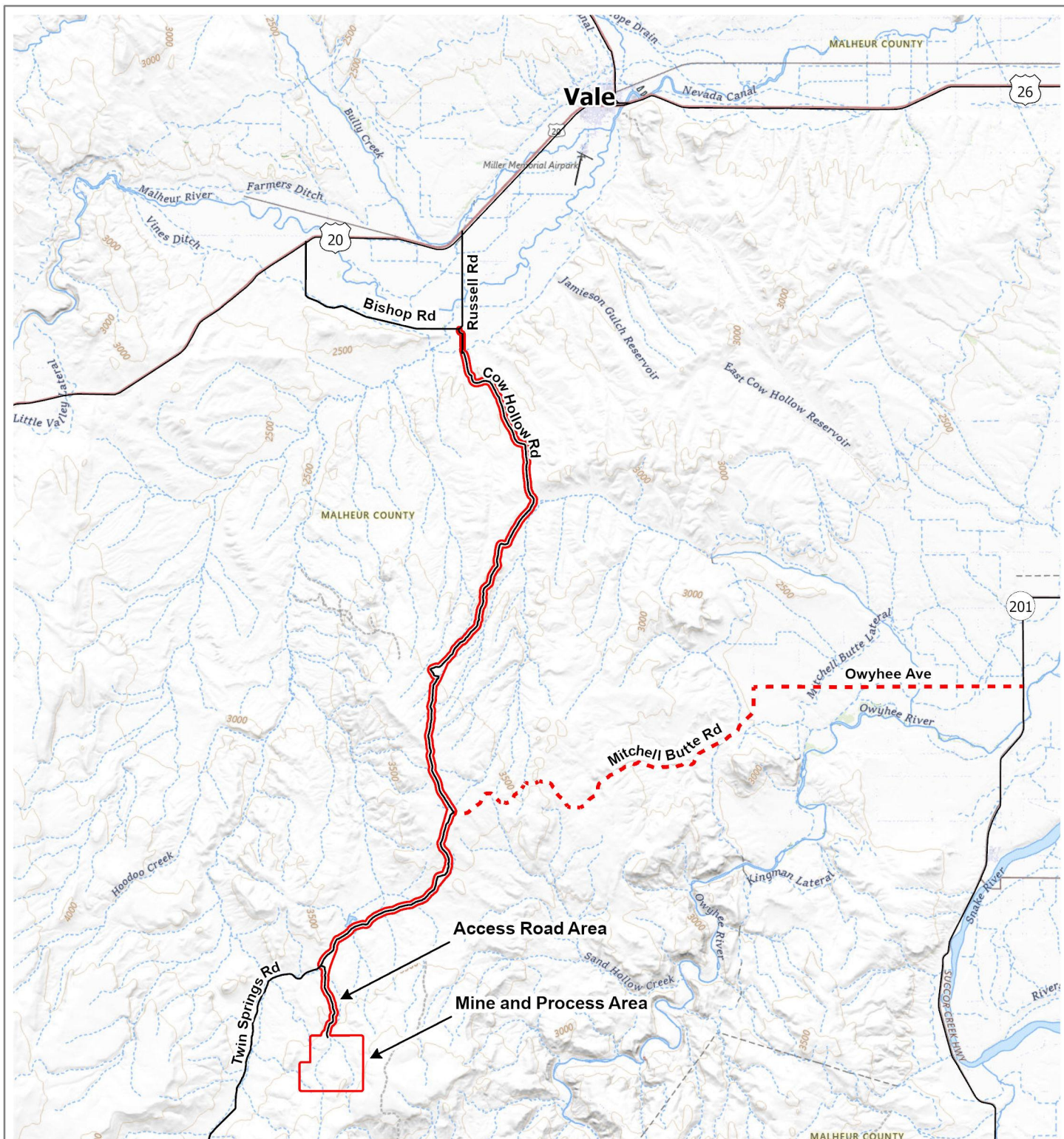


- | | |
|--------------------------------|---------------|
| --- Emergency Access Road | Other Federal |
| Plan of Operation Boundary | State Lands |
| Bureau of Land Management | Private |
| Bureau of Reclamation | Water |
| U.S. Fish and Wildlife Service | |

Calico Resources USA Corp.
Grassy Mountain Mine

**Grassy Mountain Mine
Proposed Action**

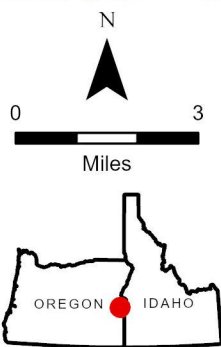




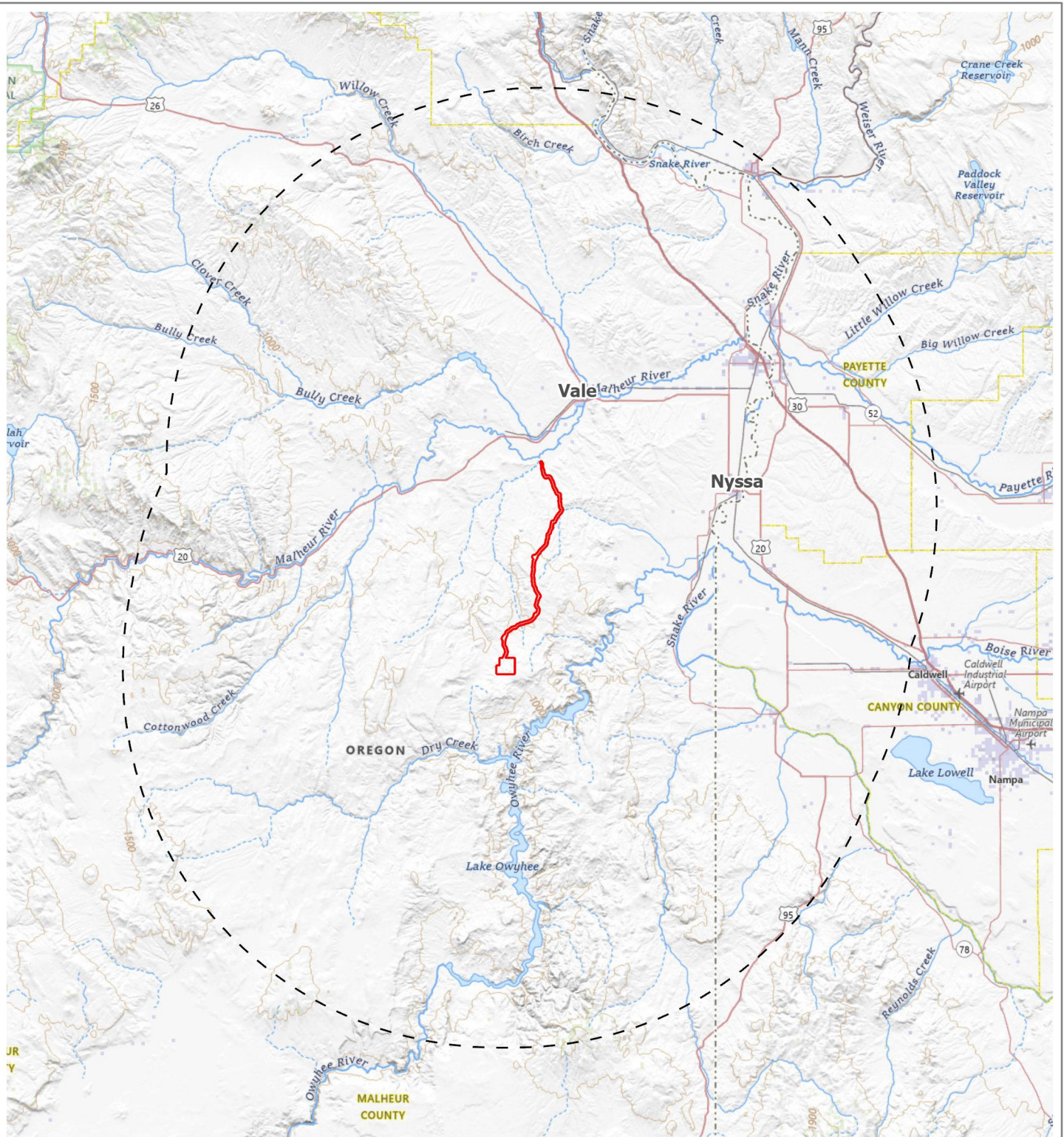
Calico Resources USA Corp.
Grassy Mountain Mine



**Plan of Operations
Boundary**



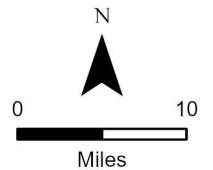
- Existing Road
- Emergency Access Road
- Plan of Operation Boundary



Calico Resources USA Corp.
Grassy Mountain Mine

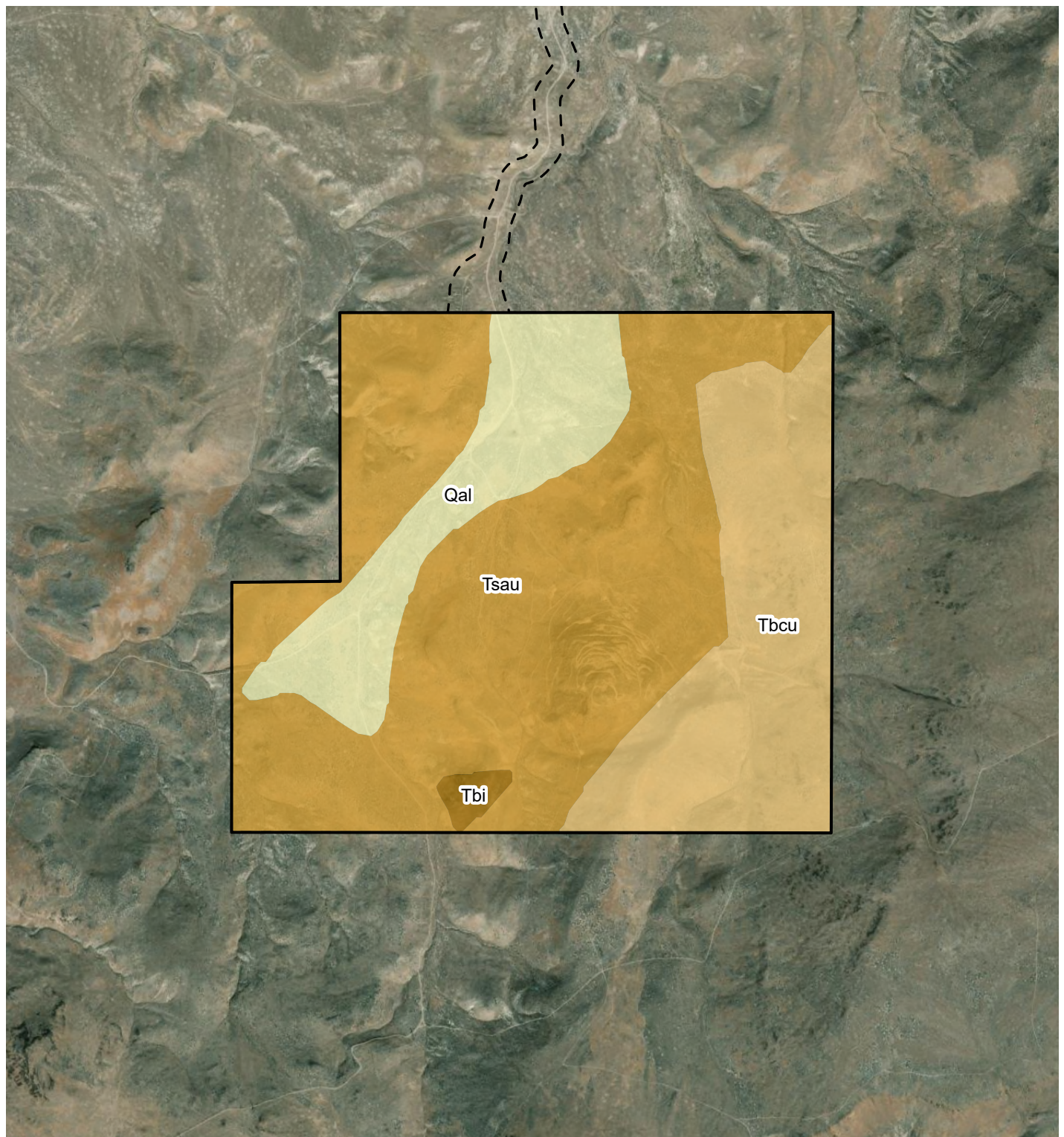


**Air Quality and
Greenhouse Gas
Analysis Area**



- Plan of Operation Boundary
- Area of Analysis (30 mile Plan of Operation Boundary Buffer)

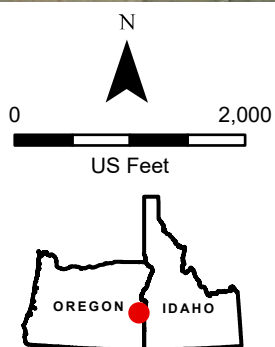




Calico Resources USA Corp.
Grassy Mountain Mine



**Geology of the Mine
and Process Area**



Mine Process Area

Access Road Area

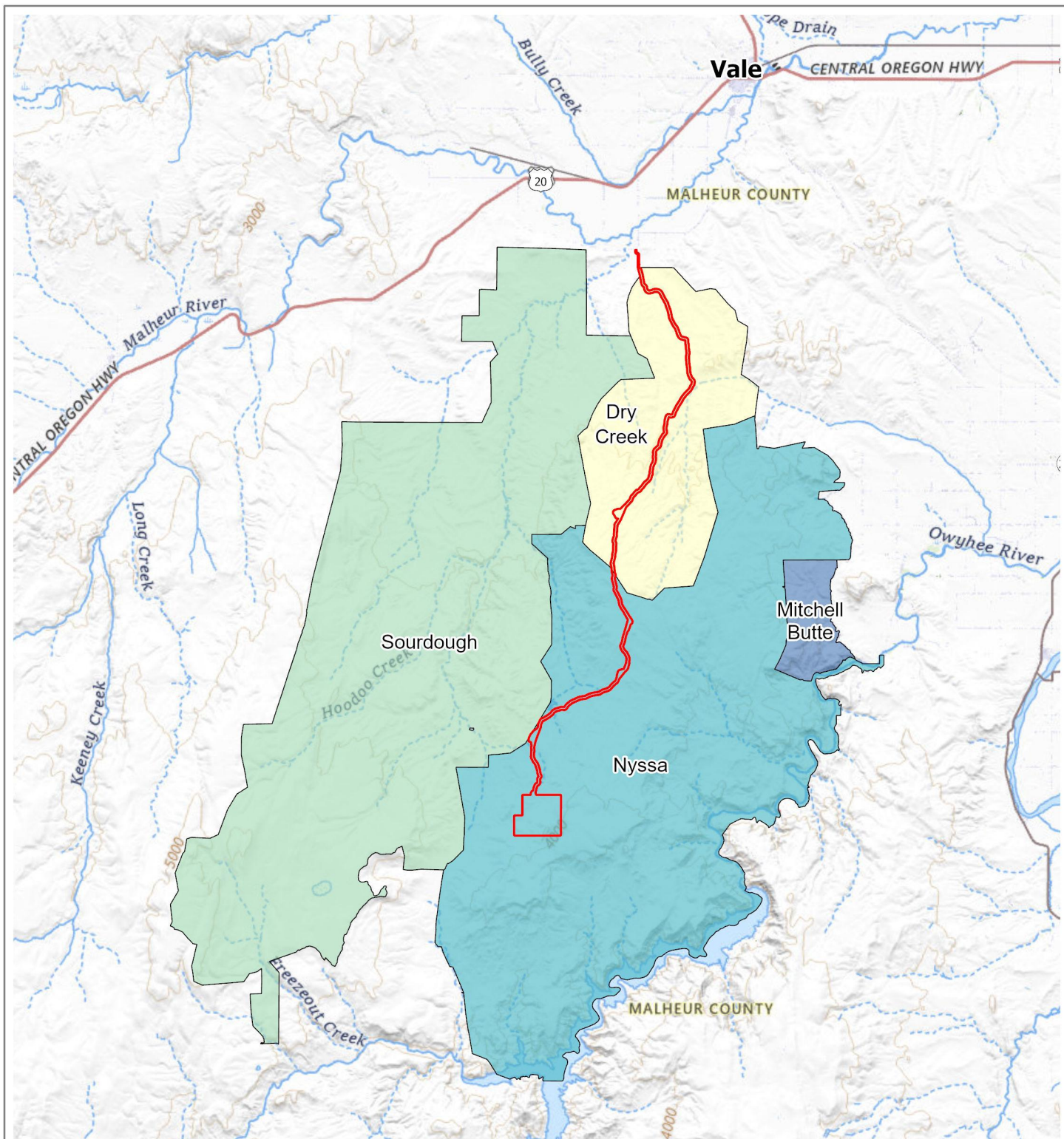
Geologic Unit

Qal: Alluvium

Tbcu: Upper calc-alkaline lava flows

Tbi: Basalt intrusions

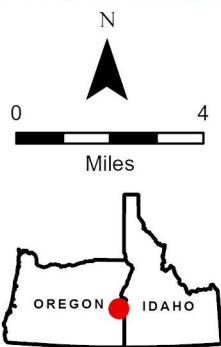
Tsau: Upper arkosic sandstone, conglomerate and tuffaceous siltstone



Calico Resources USA Corp.
Grassy Mountain Mine



**Range Management
Analysis Area**



Plan of Operation Boundary

Grazing Allotment

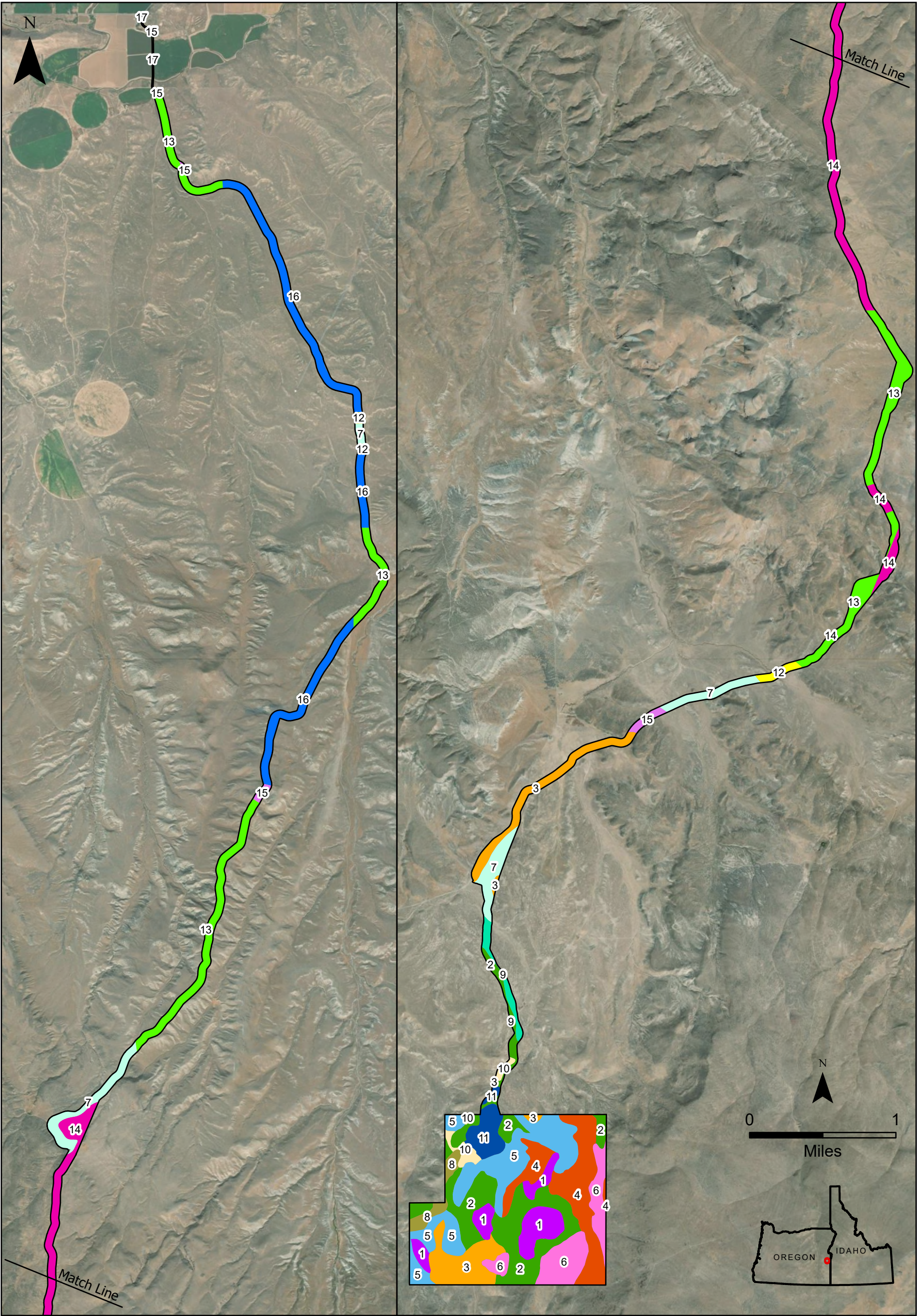
- Dry Creek
- Sourdough
- Nyssa
- Mitchell Butte



- | | |
|--|--------------------------------|
| Plan of Operations Boundary | U.S. Forest Service |
| Socioeconomics Study Area (Malheur County) | U.S. Fish and Wildlife Service |
| Bureau of Land Management | Other Federal |
| Bureau of Reclamation | State Lands |
| Bureau of Indian Affairs | Private |

Calico Resources USA Corp.
Grassy Mountain Mine

**Socioeconomics
Analysis Area**



- Plan of Operation Boundary
- 1. Farmell-Rock outcrop complex, 8 to 30 percent slopes
 - 2. Farmell-Chardoton very cobbly soil, 15 to 30 percent slopes
 - 3. Farmell-Chardoton very cobbly soil, 4 to 15 percent slopes

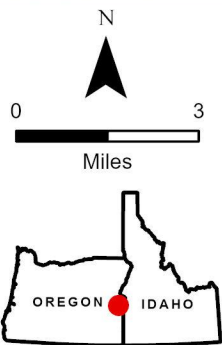
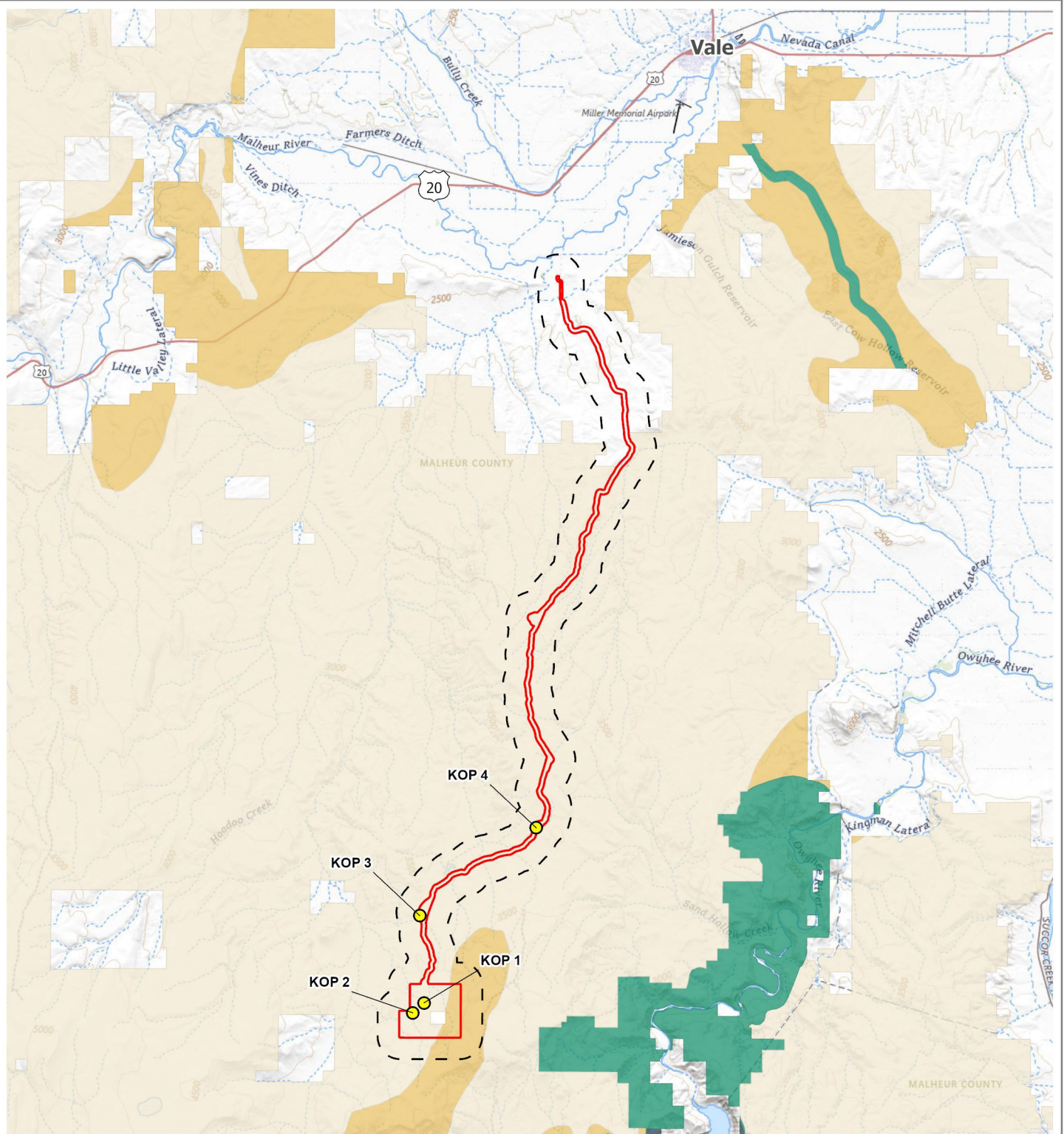
- 4. Farmell-Chardoton extremely stony soil, 4 to 15 percent slopes
- 5. Farmell-Chardoton soil, 8 to 15 percent slopes
- 6. Ruckles very stony loam, 8 to 30 percent slopes
- 7. Shano silt loam, 2 to 6 percent slopes

- 8. Soil A extremely gravelly sandy loam, 15 to 30 percent slopes
- 9. Virtue loam, 2 to 8 percent slopes
- 10. Xeric Torriorthents, 8 to 30 percent slopes
- 11. Soil B very gravelly sand loam, 8 to 30 percent slopes
- 12. Nyssa silt loam, 2 to 8 percent slopes

- 13. Drewsey very fine sandy loam, 2 to 6 percent slopes
- 14. Rucklick Cobbly loam, 4 to 15 percent slopes
- 15. Drewsey-Quincy-Solarview complex, 8 to 30 percent slopes
- 16. Owsel silt loam, 1 to 6 percent slopes
- 17. Powder silt loam, 0 to 3 percent slopes

Calico Resources USA Corp.
Grassy Mountain Mine

Soils Analysis Area



- Key Observation Point
- Plan of Operation Boundary
- Area of Analysis (1 mile Plan of Operation Boundary Buffer)

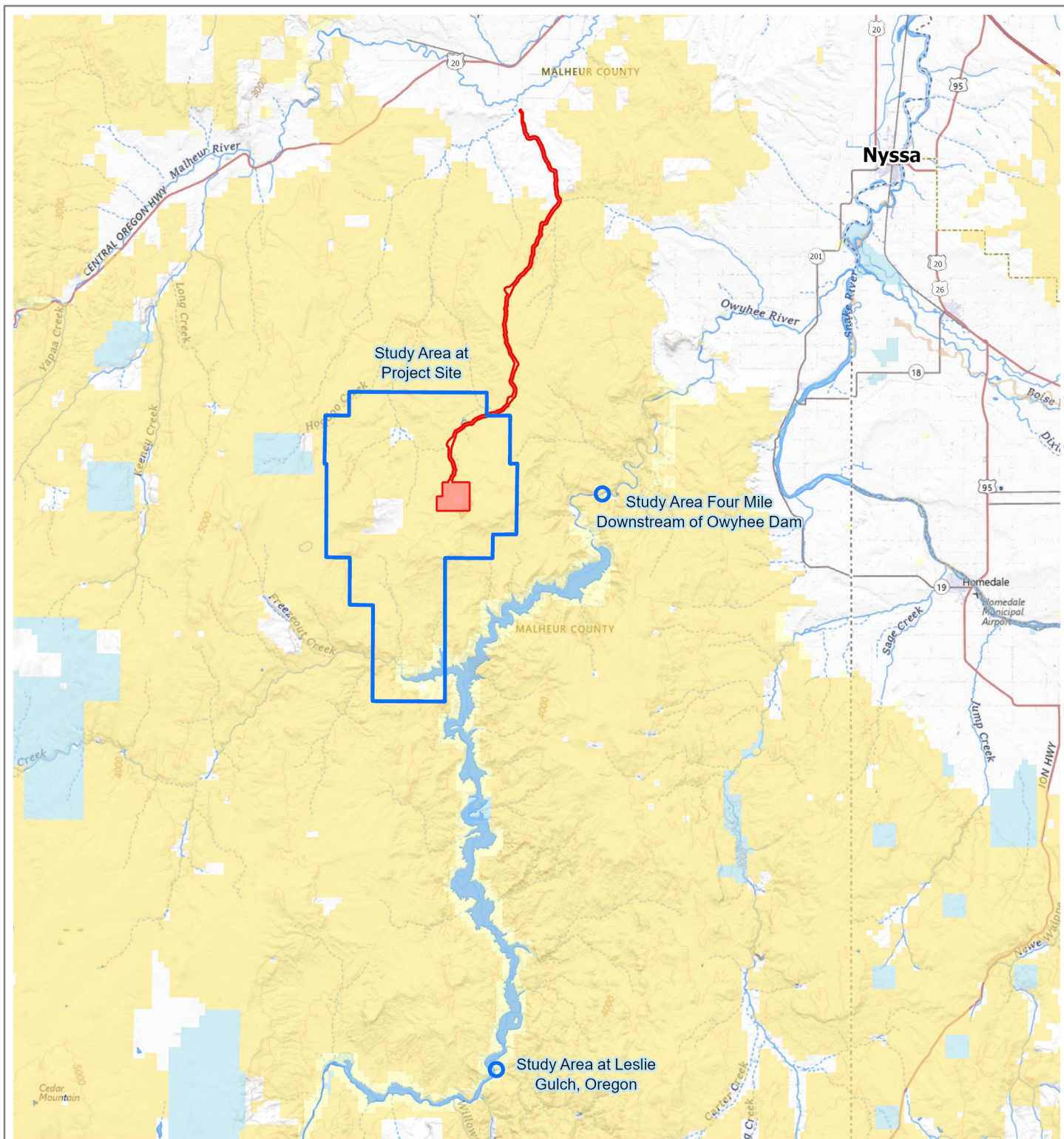
Visual Resource Management (VRM) Classes

- VRM 1 - Preserve existing character of landscape
- VRM 2 - Largely retain the existing character of the landscape
- VRM 3 - Partially retain the existing character of the landscape
- VRM 4 - Modification of the character of the landscape is allowed

Calico Resources USA Corp.
Grassy Mountain Mine



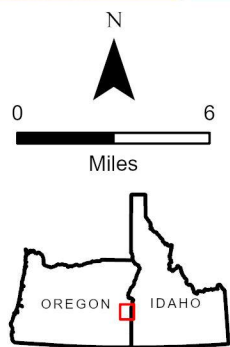
**Visual Resources
Analysis Area
with VRM Classes**



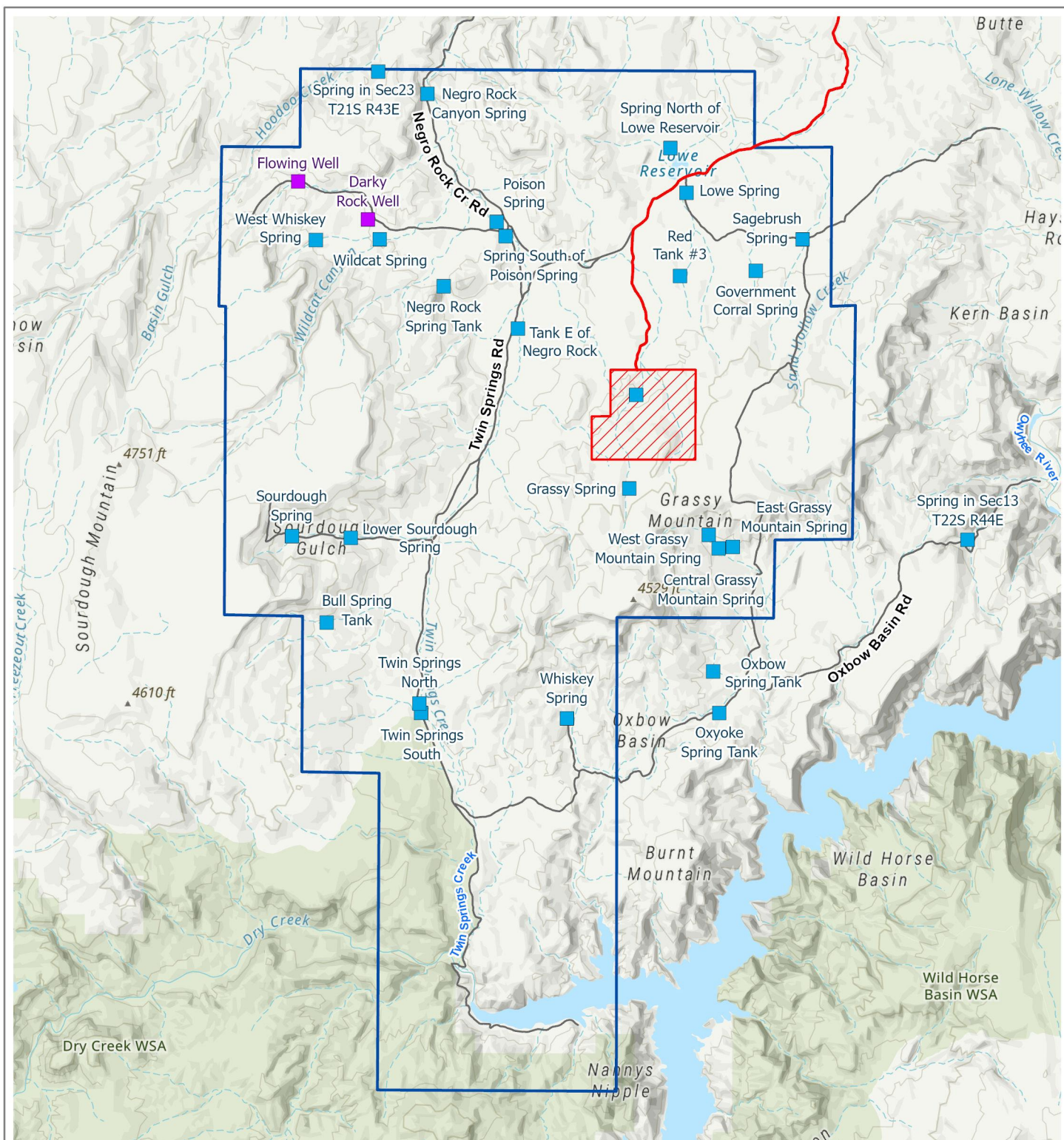
Calico Resources USA Corp.
Grassy Mountain Mine



**Water Resources
Analysis Area**



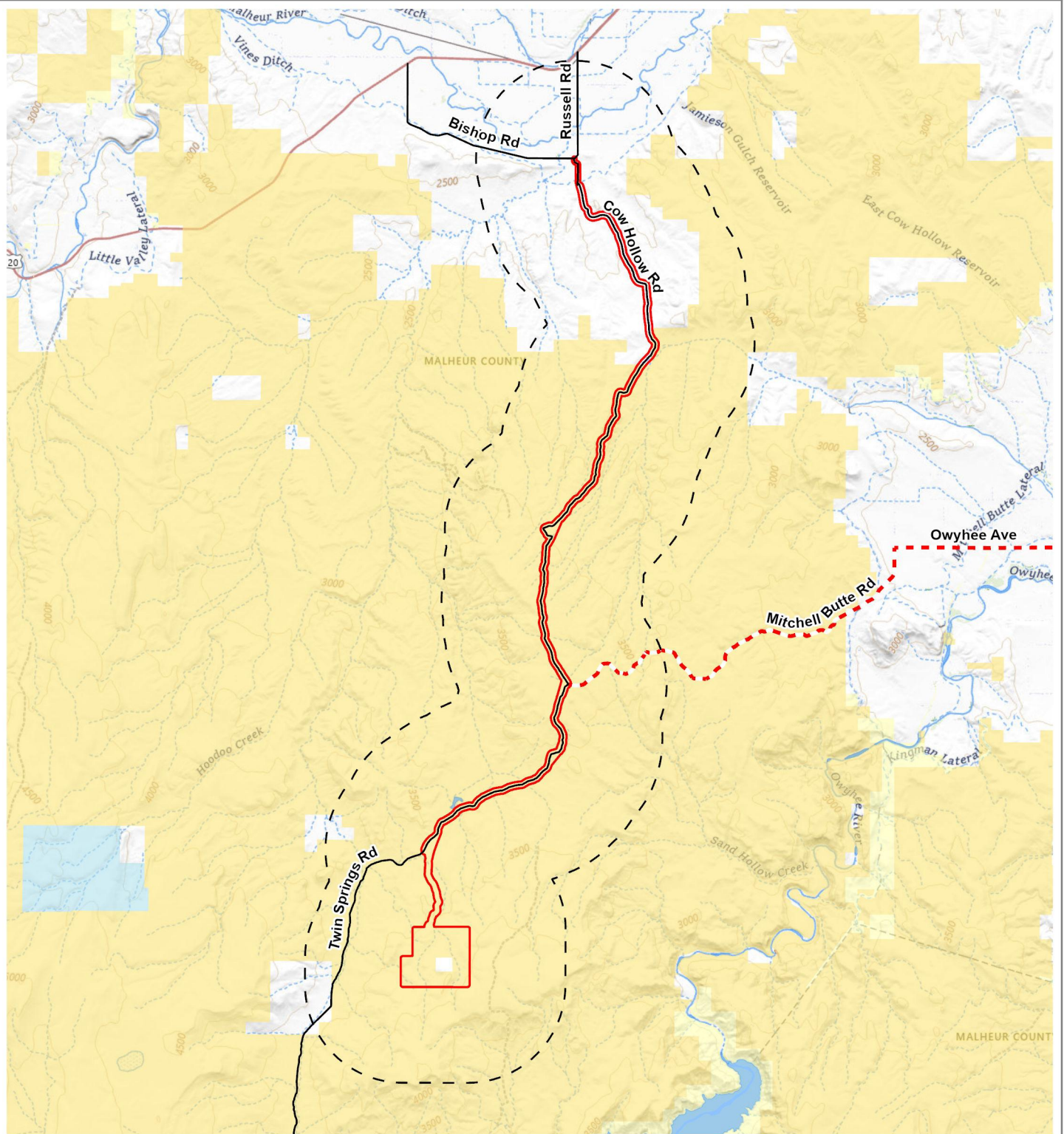
- | | |
|--|---|
| Plan of Operation Boundary | Bureau of Reclamation |
| Mine and Process Area | U.S. Fish and Wildlife Service |
| Water Resource Analysis Area | Other Federal |
| Water | State Lands |
| Bureau of Land Management | Private |



Calico Resources USA Corp.
Grassy Mountain Mine



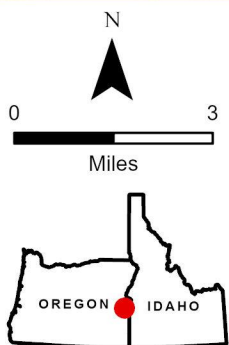
Surface Water Features and Springs



Calico Resources USA Corp.
Grassy Mountain Mine

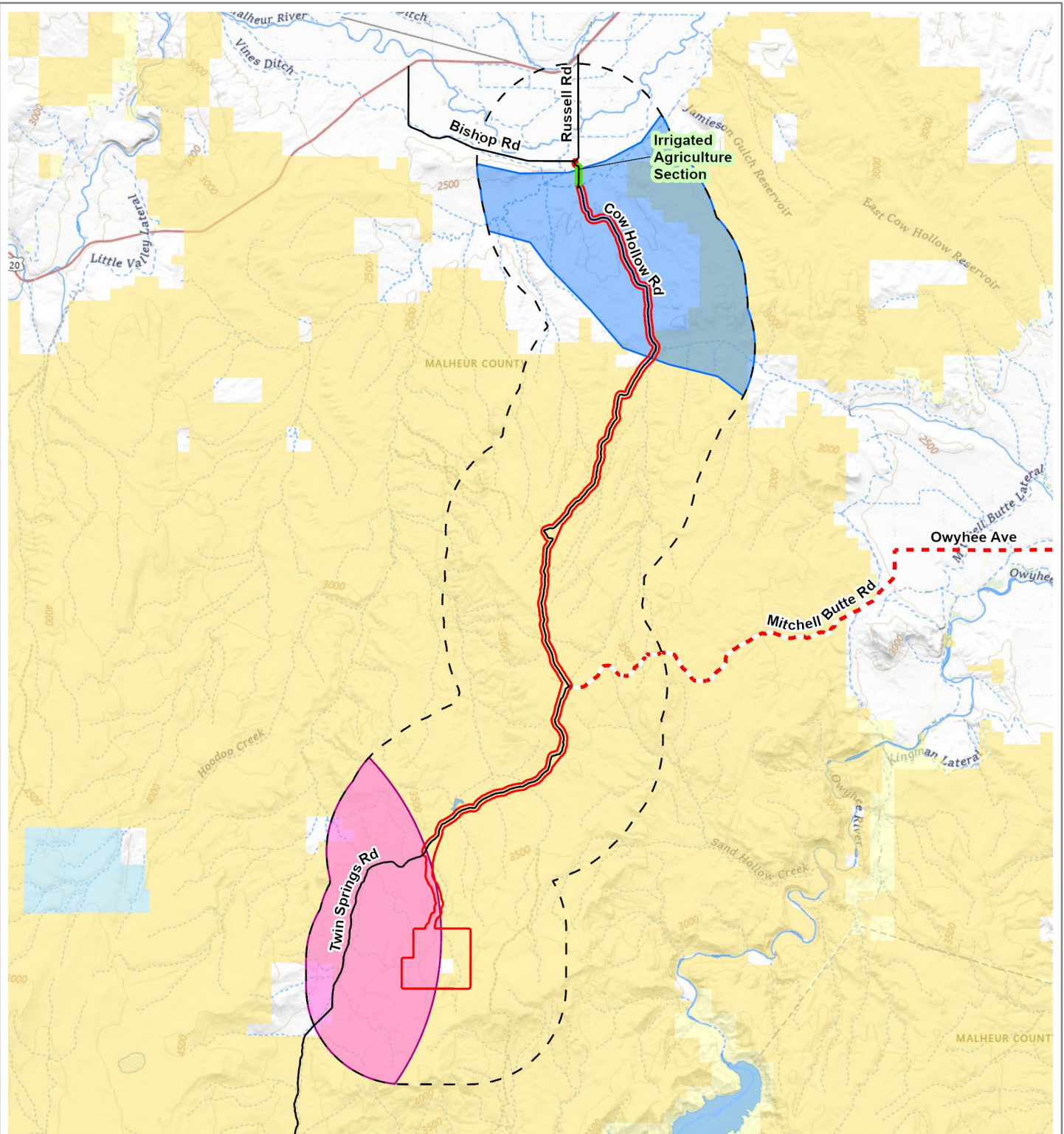


**Wildlife and
Special Status Species
Analysis Area**



- Existing Road
- Emergency Access Road
- Plan of Operation Boundary
- - - Analysis Area (2 mile Plan of Operation Boundary Buffer)

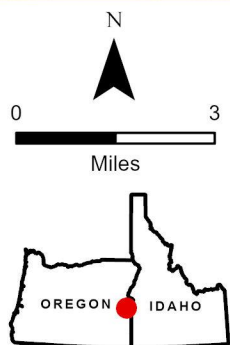
- Bureau of Land Management
- Bureau of Reclamation
- State Lands
- Private
- Water



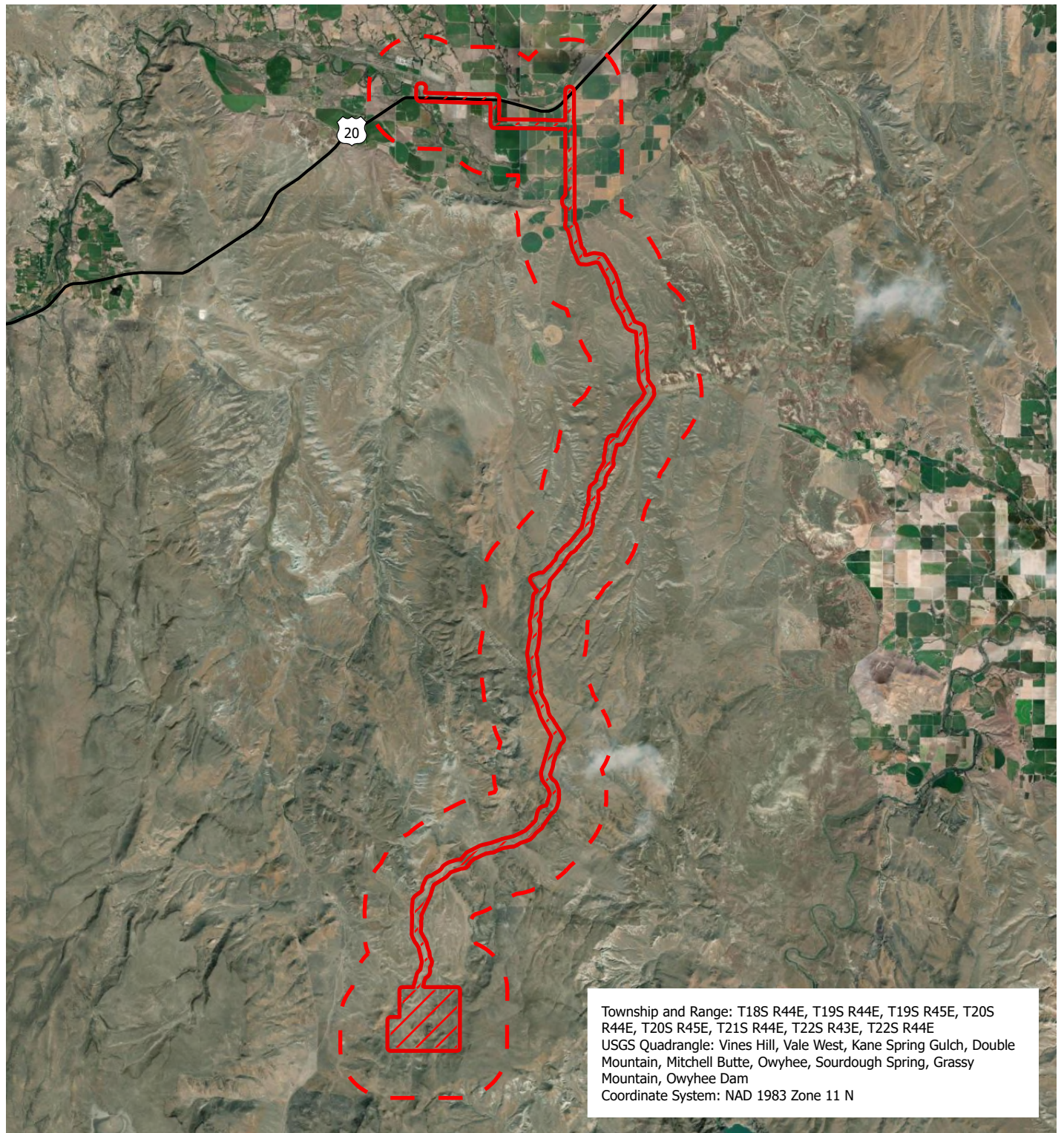
Calico Resources USA Corp.
Grassy Mountain Mine



Wildlife Habitats in the Analysis Area



- Existing Road
- Irrigated Agriculture Section
- Emergency Access Road
- Plan of Operation Boundary
- Low Density Sage-grouse Use Area
- Mule Deer Winter Range
- Analysis Area (2 mile Plan of Operation Boundary Buffer)
- Bureau of Land Management
- Bureau of Reclamation
- State Lands
- Private
- Water



Calico Resources USA Corp.
 Grassy Mountain Mine



Area of Potential Effects (APE)

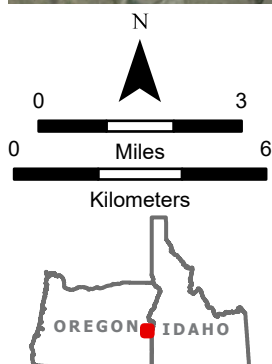
Physical Disturbance

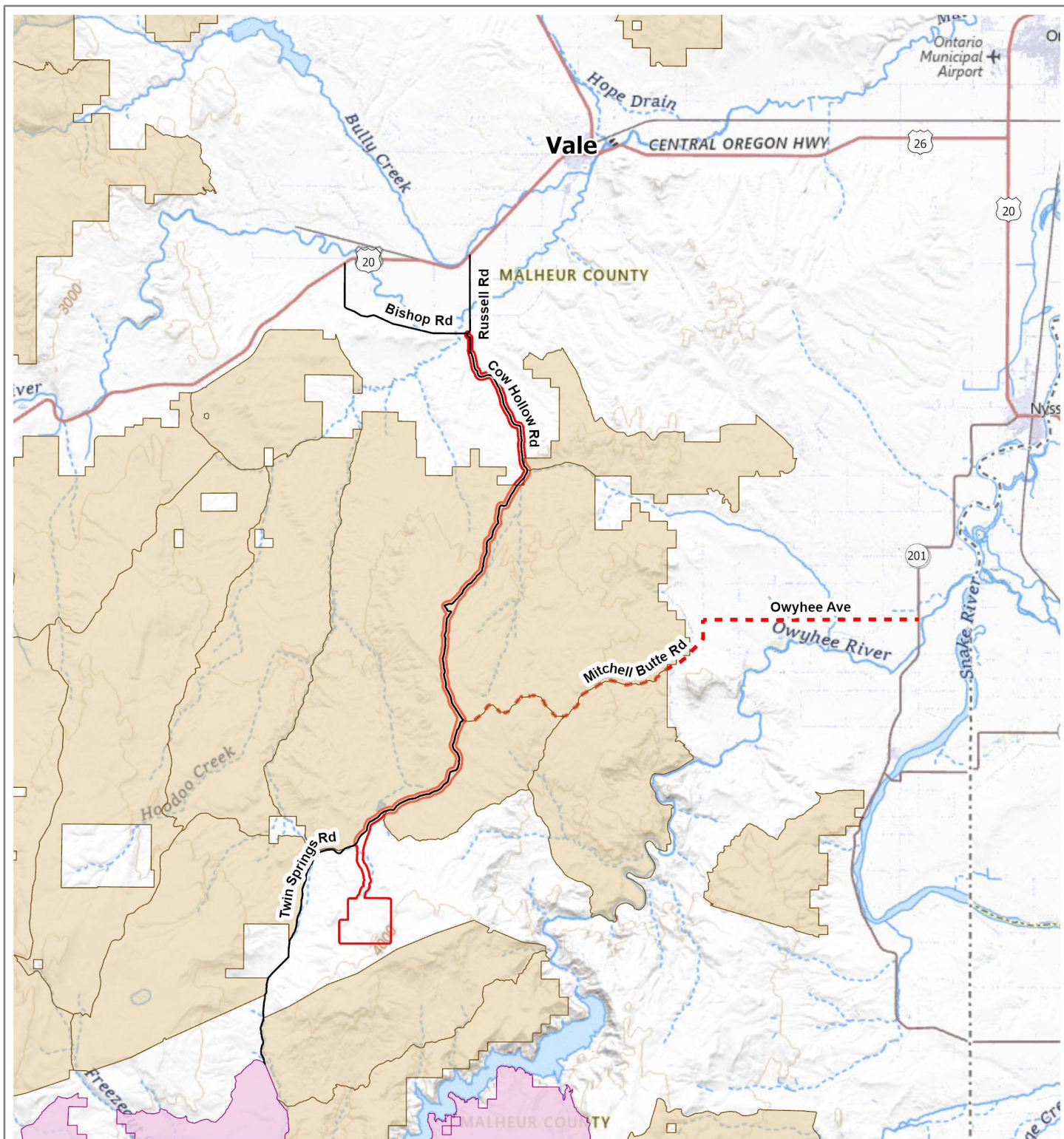
Proposed Action

Visual, Auditory, and Atmospheric Disturbance

Proposed Action

Proposed Action APE

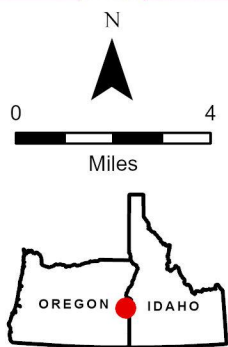




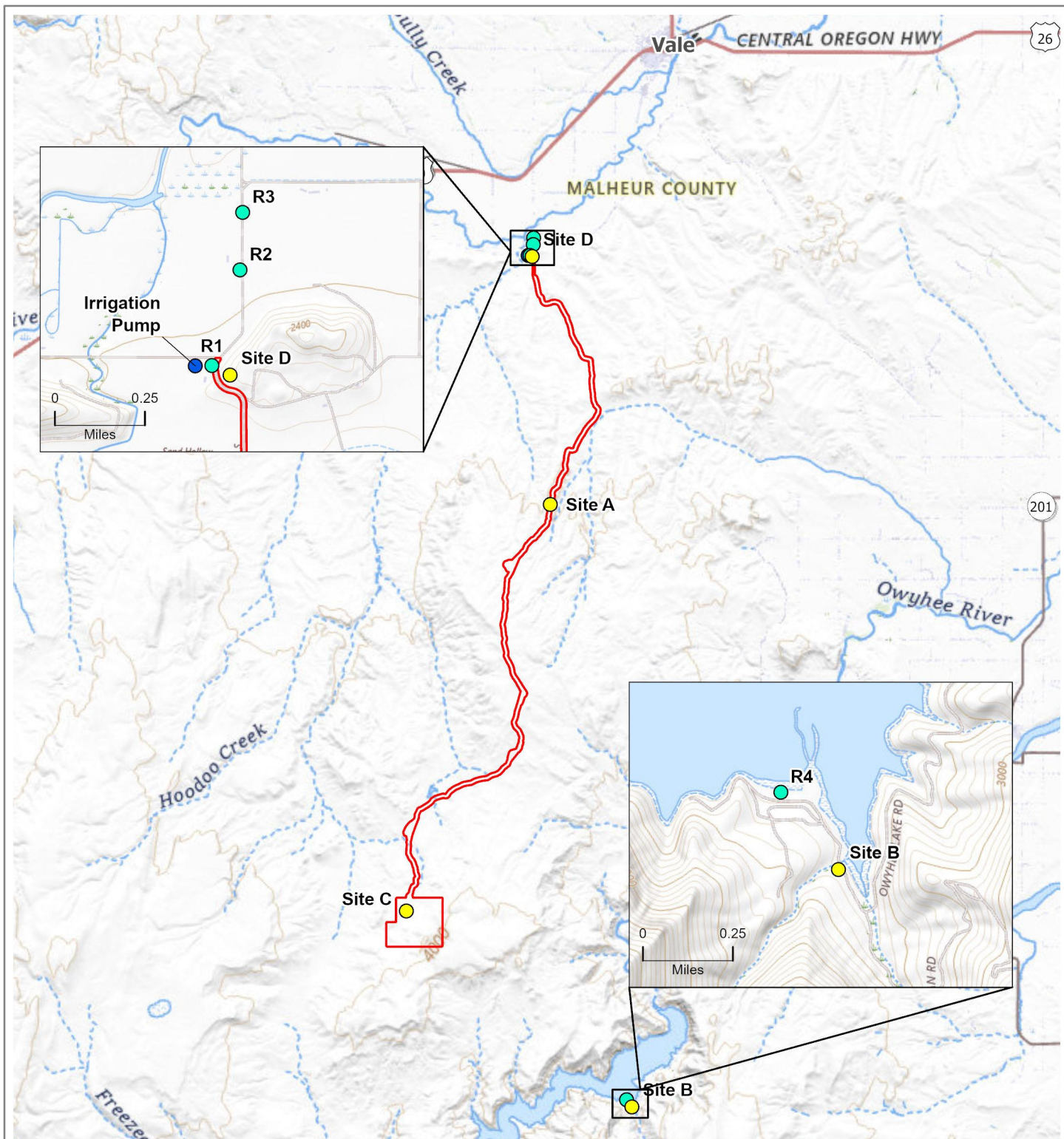
Calico Resources USA Corp.
Grassy Mountain Mine



**Lands with Wilderness
Characteristics**



- Existing Road
- Emergency Access Road
- Plan of Operation Boundary
- Wilderness Study Area
- Unit Managed for Other Resources



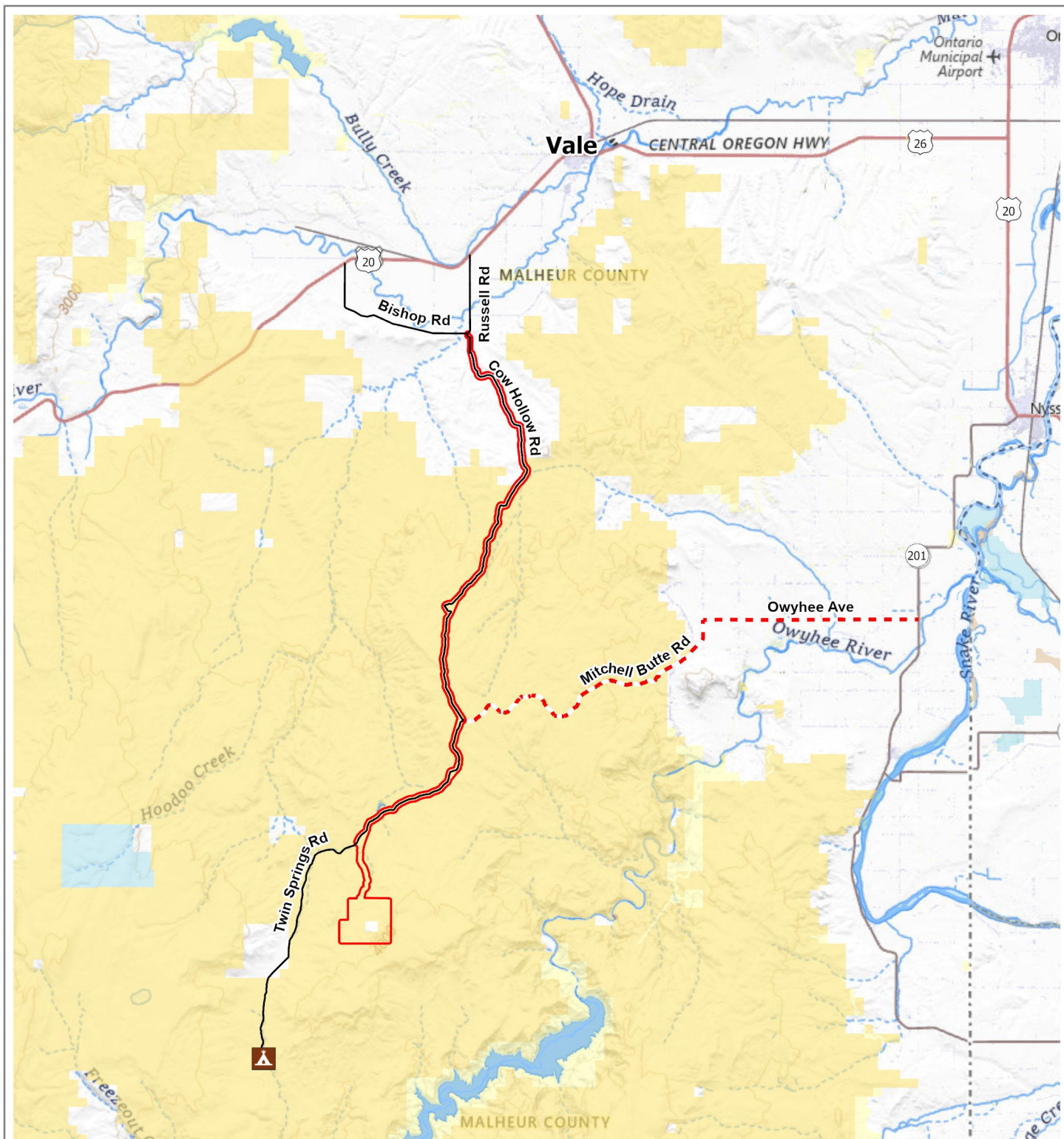
Calico Resources USA Corp.
Grassy Mountain Mine



Noise Analysis Area

- Irrigation Pump
- Noise Receptor
- Ambient Noise Measurement Site
- Plan of Operation Boundary

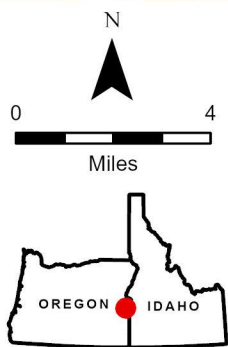




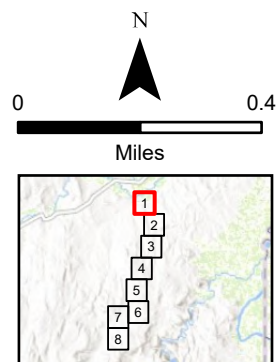
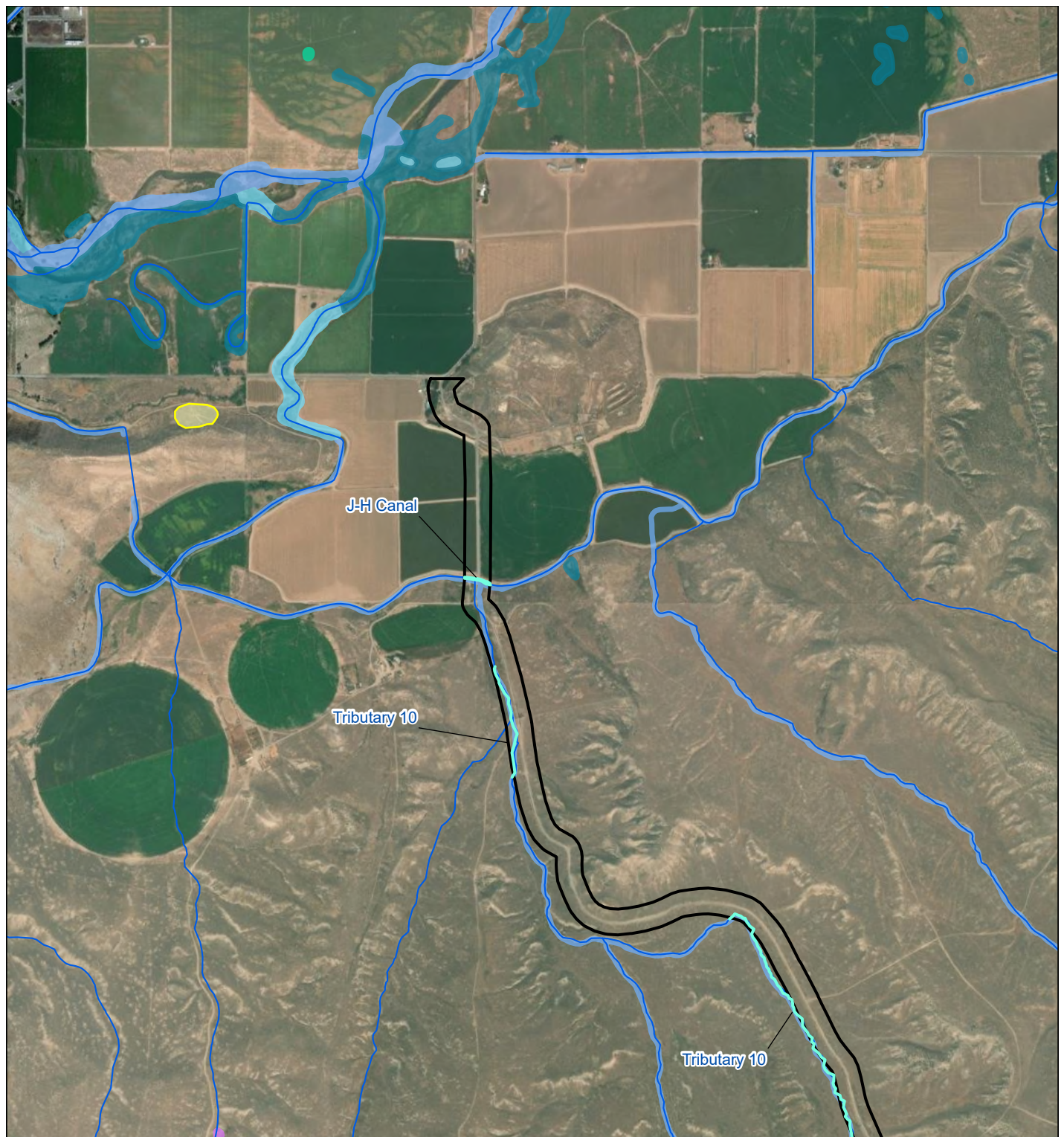
Calico Resources USA Corp.
Grassy Mountain Mine



**Recreation Opportunities
in Analysis Area**



- | | |
|----------------------------|--------------------------------|
| Twin Springs Campground | Bureau of Reclamation |
| Existing Road | U.S. Fish and Wildlife Service |
| Emergency Access Road | Other Federal |
| Plan of Operation Boundary | State Lands |
| Bureau of Land Management | Private |
| | Water |



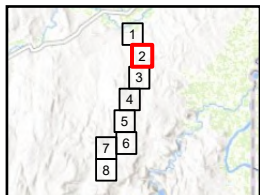
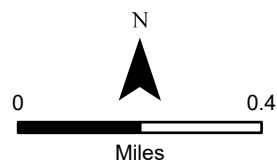
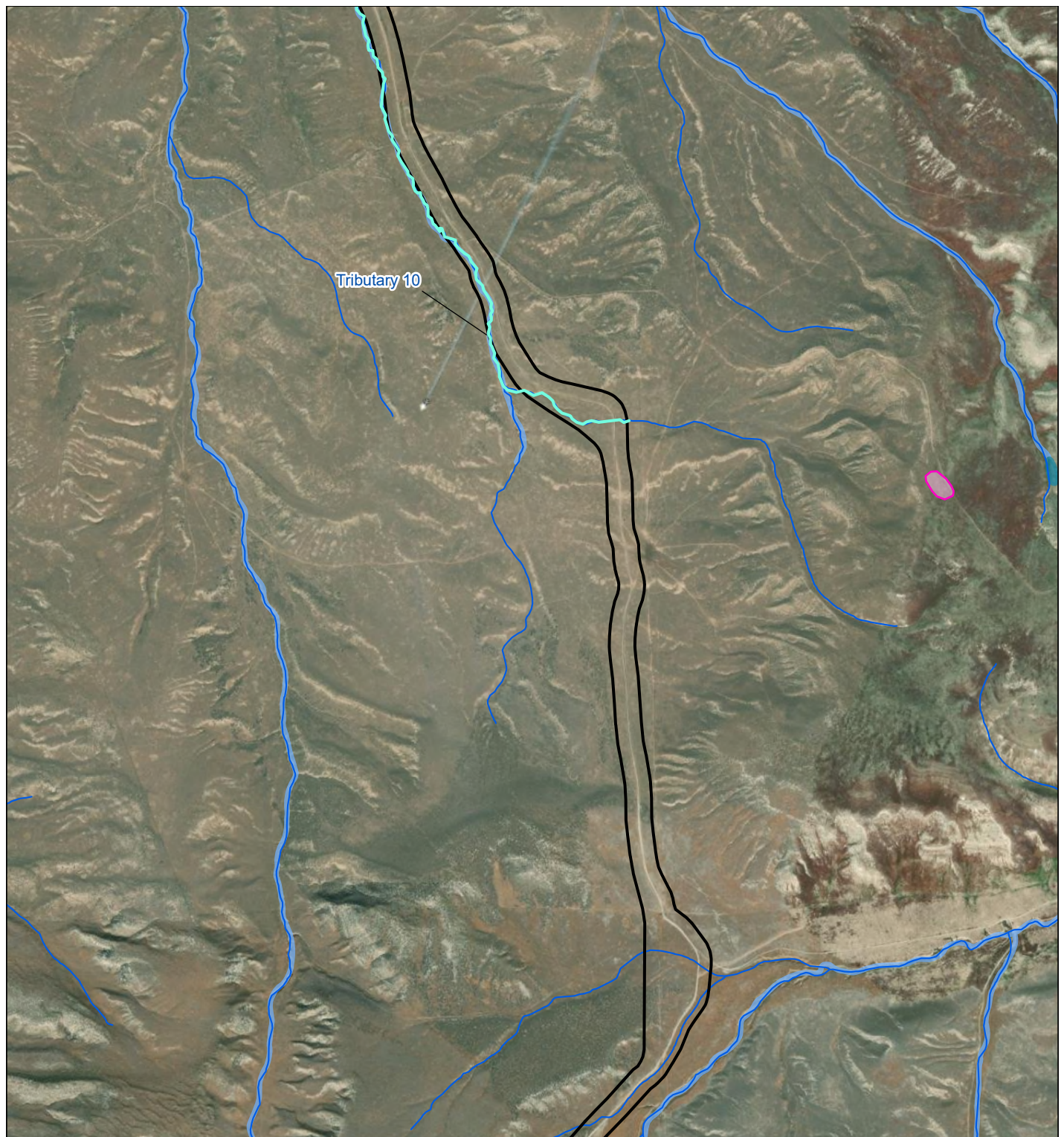
- Study Area
- Cronquist's stickseed
- NHD Flowline
- Surveyed Waterbody**
- Waterway

- NWI Wetland**
- Palustrine Aquatic Bed
 - Palustrine Emergent
 - Palustrine Scrub Shrub
 - Palustrine Unconsolidated Shore
 - Riverine

Calico Resources USA Corp.
Grassy Mountain Mine



Vegetation and Wetlands



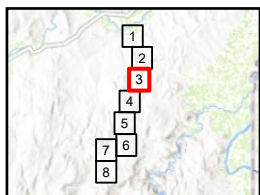
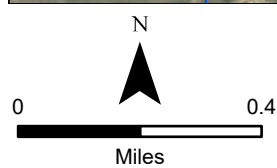
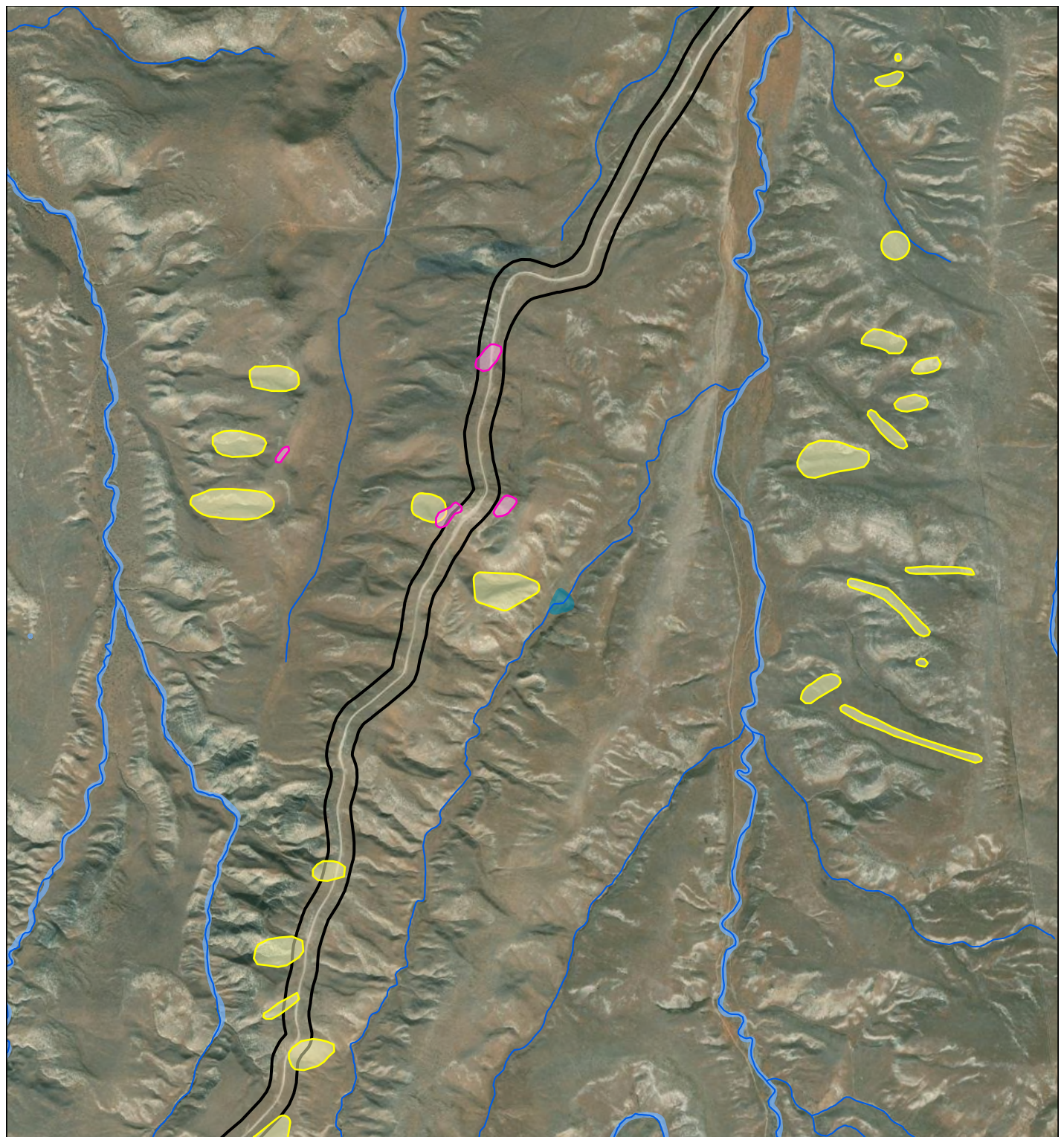
- Study Area
- Mulford's milk-vetch
- NHD Flowline
- Surveyed Waterbody**
- Waterway
- NWI Wetland**
- Palustrine Emergent
- Riverine

Calico Resources USA Corp.
Grassy Mountain Mine



**Vegetation and
Wetlands**

Page 2 of 8

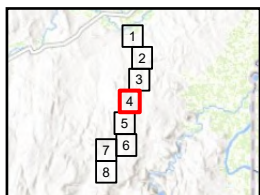
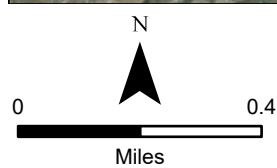
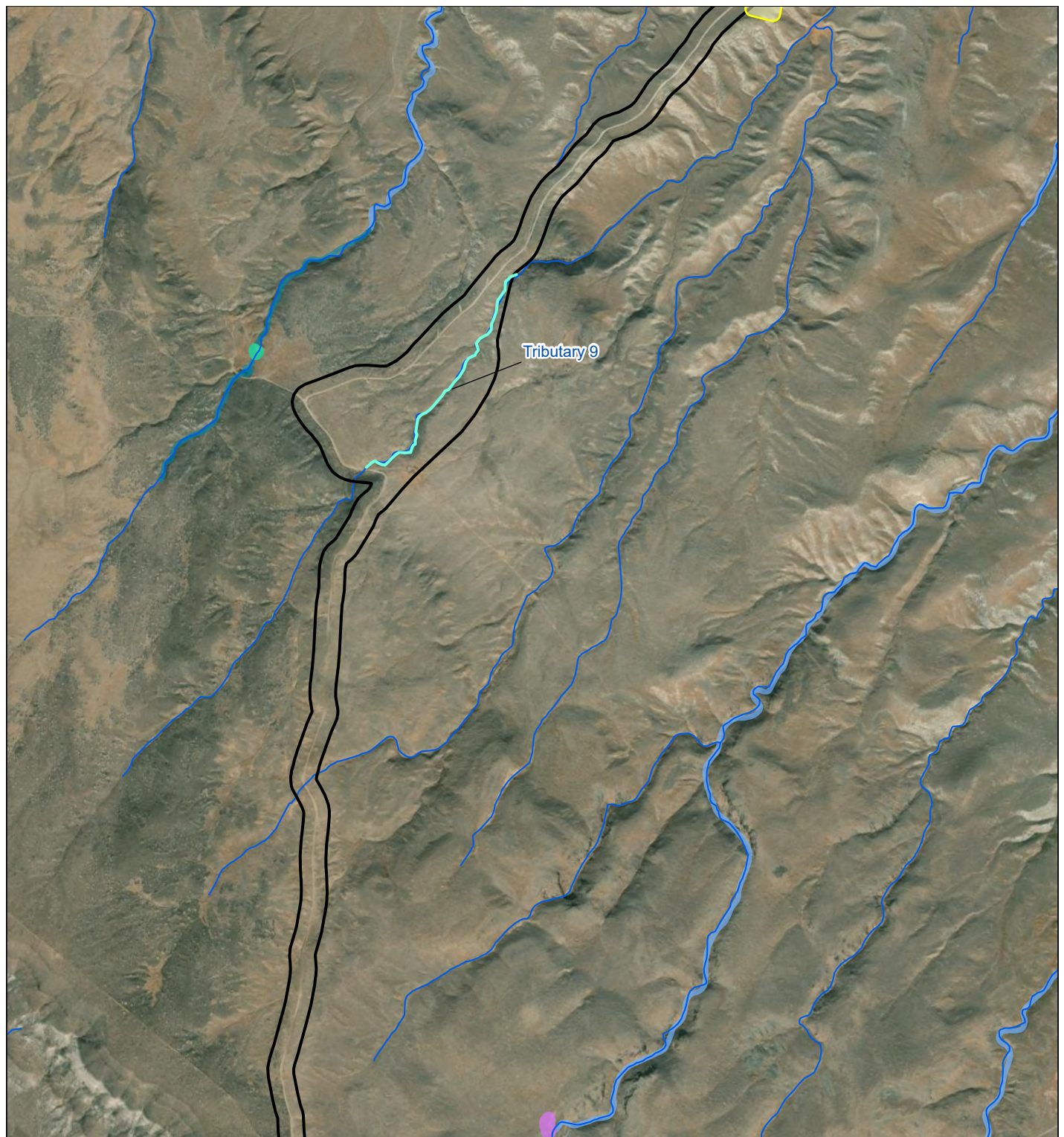


- Study Area
- Cronquist's stickseed
- Mulford's milk-vetch
- NHD Flowline
- NWI Wetland**
- Palustrine Emergent
- Riverine

Calico Resources USA Corp.
Grassy Mountain Mine



Vegetation and Wetlands



- Study Area
- Cronquist's stickseed
- NHD Flowline
- Surveyed Waterbody**
- Waterway

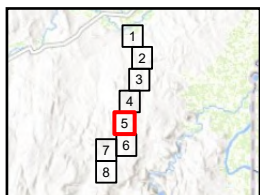
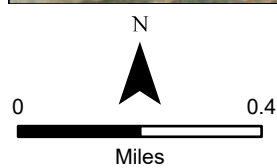
- NWI Wetland**
- Palustrine Aquatic Bed
 - Palustrine Emergent
 - Palustrine Unconsolidated Shore
 - Riverine

Calico Resources USA Corp.
Grassy Mountain Mine



Vegetation and Wetlands

Page 4 of 8



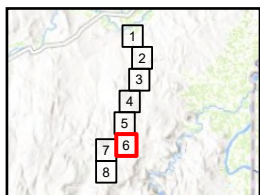
- Study Area
- Cronquist's stickseed
- NHD Flowline
- NWI Wetland**
 - Palustrine Unconsolidated Shore
 - Riverine

Calico Resources USA Corp.
Grassy Mountain Mine



Vegetation and Wetlands

Page 5 of 8



- Study Area
- NHD Flowline

Surveyed Waterbody

- Waterway

NWI Wetland

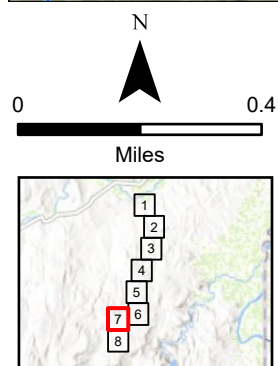
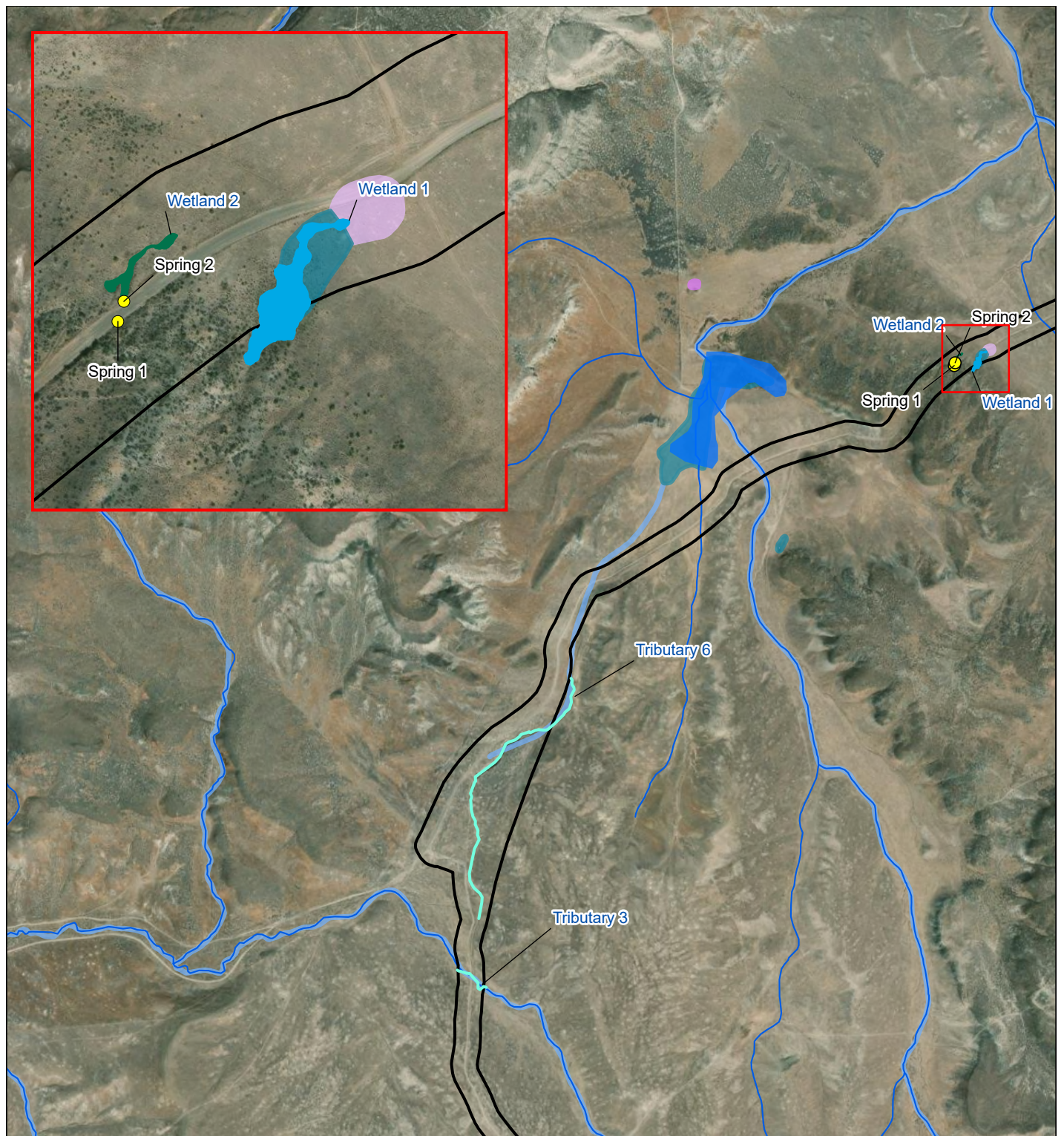
- Palustrine Emergent
- Palustrine Unconsolidated Bottom
- Riverine

Calico Resources USA Corp.
Grassy Mountain Mine



Vegetation and Wetlands

Page 6 of 8



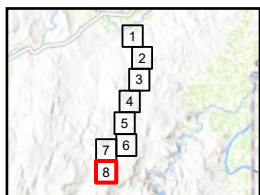
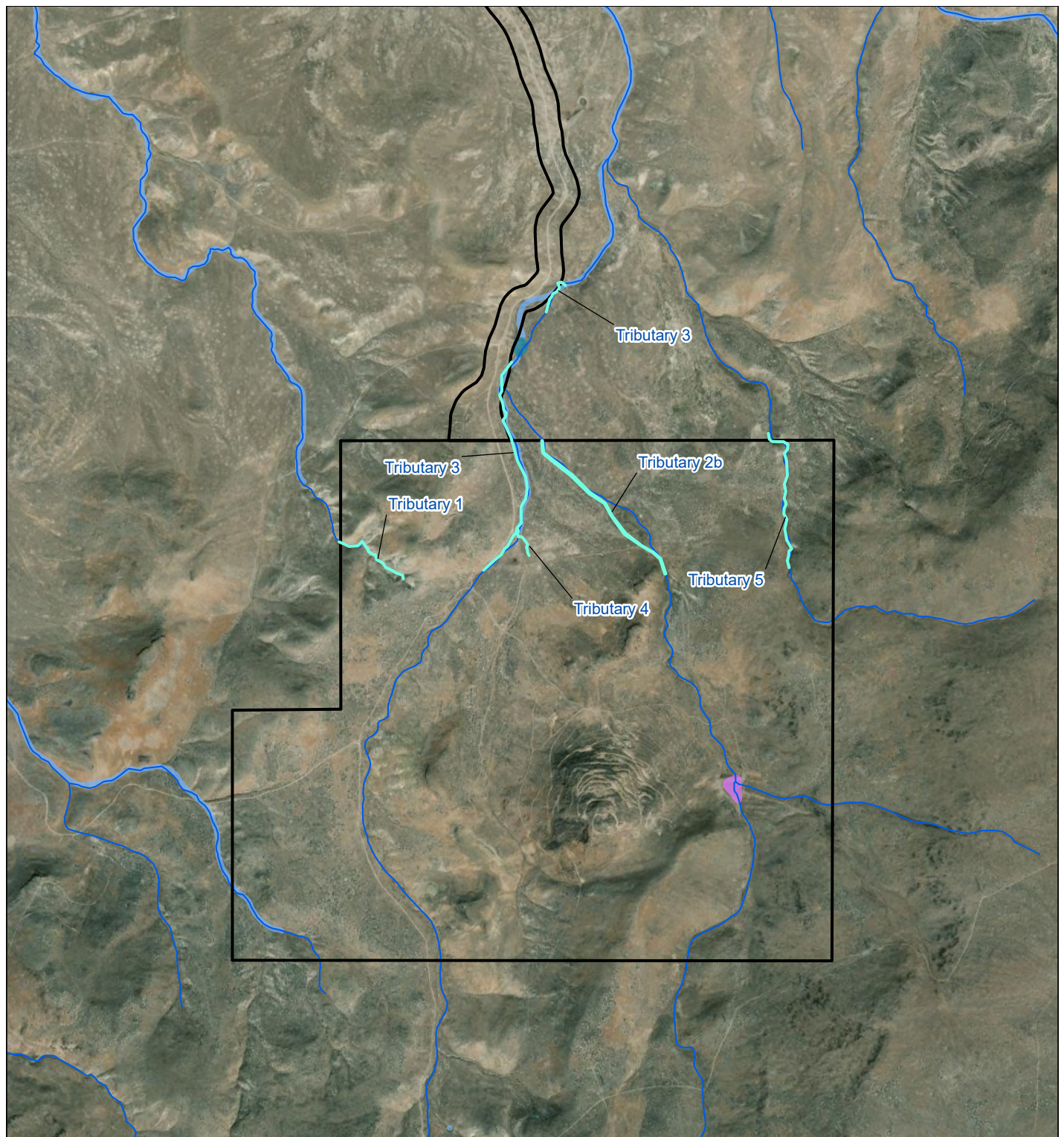
- Study Area
- NHD Flowline
- NHD Waterbody
- Surveyed Waterbody**
- Waterway
- Surveyed Wetland**
- Emergent Wetland

- Unmapped Wetland
- NWI Wetland**
- Palustrine Emergent
- Palustrine Unconsolidated Bottom
- Palustrine Unconsolidated Shore
- Riverine

Calico Resources USA Corp.
Grassy Mountain Mine



Vegetation and Wetlands



Study Area

NHD Flowline

Surveyed Waterbody

Waterway

NWI Wetland

Palustrine Emergent

Palustrine Unconsolidated Shore

Riverine

Calico Resources USA Corp.
Grassy Mountain Mine



Vegetation and Wetlands

Page 8 of 8